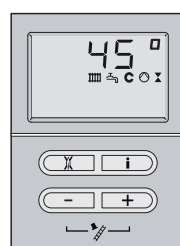
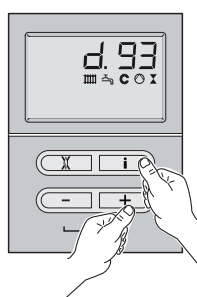
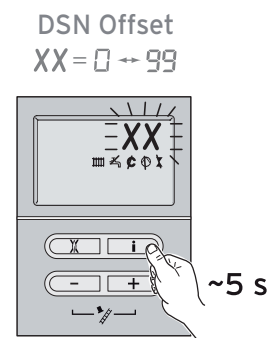
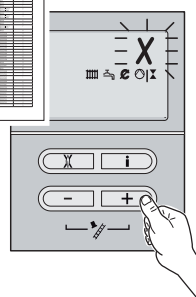
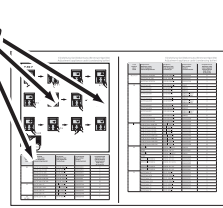
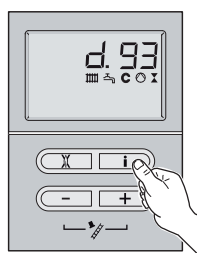
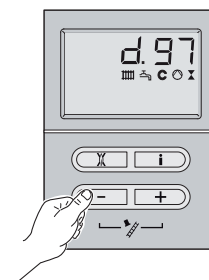
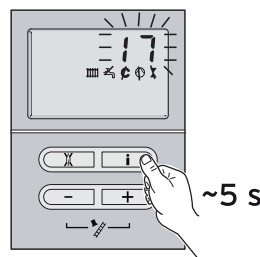
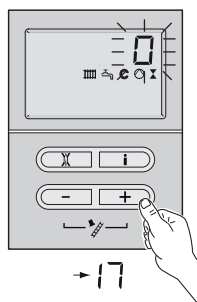
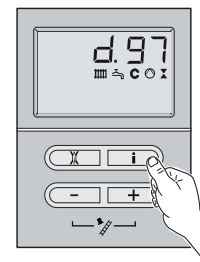
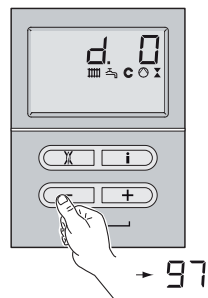
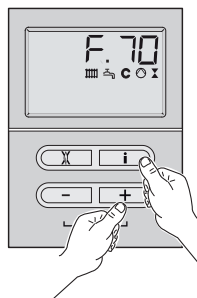


Einstellung Gerätekennung (Brennwertgeräte)

Adjustment appliance code (condensing boiler)



F.70 ?



Einstellung Gerätekennung (ecoTEC exklusiv eGAS)
Adjustment appliance code (ecoTEC exklusiv boiler)

Land country pays Land	Gerätename appliance name nome d'appareil Verwarmingstoestel	Gerätetyp appliance type type d'appareil Toesteltype	Teilenummer part number numéro Toestelnummer	Geräteerkennung appliance code code d'appareil Toestelvariant DSN Offset (d.76; d.93)
AT	ecoTEC exklusiv VC	VC AT 146/4-7	0010004110	6
	ecoTEC exklusiv VC	VC AT 206/4-7	0010004111	7
	ecoTEC exklusiv VC	VC AT 276/4-7	0010004112	8
	ecoTEC exklusiv VC	VC AT 356/4-7	0010004113	9
	ecoTEC exclusive VC	VC AT 356/4-7 A	0010017805	9
	ecoTEC exklusiv VC	VC AT 466/4-7	0010004114	10
	ecoTEC exclusive VC	VC AT 466/4-7 A	0010017806	10
BE	ecoTEC exklusiv VC	VC BE 146/4-7	0010012912	6
	ecoTEC exklusiv VC	VC BE 206/4-7	0010012913	7
	ecoTEC exklusiv VC	VC BE 276/4-7	0010012914	8
	ecoTEC exklusiv VC	VC BE 356/4-7	0010012915	9
CH	ecoTEC exklusiv VC	VC CH 146/4-7	0010004115	6
	ecoTEC exklusiv VC	VC CH 206/4-7	0010004116	7
	ecoTEC exklusiv VC	VC CH 276/4-7	0010004117	8
	ecoTEC exklusiv VC	VC CH 356/4-7	0010004118	9
	ecoTEC exclusive VC	VC CH 356/4-7 A	0010017807	9
	ecoTEC exklusiv VC	VC CH 466/4-7	0010004119	10
	ecoTEC exclusive VC	VC CH 466/4-7 A	0010017808	10
CZ, SK	ecoTEC exklusiv VC	VC CZ/SK 146/4-7	0010010409	6
	ecoTEC exklusiv VC	VC CZ/SK 206/4-7	0010010410	7
	ecoTEC exklusiv VC	VC CZ/SK 276/4-7	0010010411	8
DE	ecoTEC exklusiv VC	VC DE 146/4-7	0010004121	6
	ecoTEC exklusiv VC	VC DE 206/4-7	0010004122	7
	ecoTEC exklusiv VC	VC DE 276/4-7	0010004123	8
	ecoTEC exklusiv VC	VC DE 356/4-7	0010004124	9
	ecoTEC exclusive VC	VC DE 356/4-7 A	0010017809	9
	ecoTEC exklusiv VC	VC DE 466/4-7	0010004125	10
	ecoTEC exclusive VC	VC DE 466/4-7 A	0010017810	10

Einstellung Gerätekennung (ecoTEC exklusiv eGAS)
Adjustment appliance code (ecoTEC exklusiv boiler)

Land country pays Land	Gerätename appliance name nome d'appareil Verwarmingstoestel	Gerätetyp appliance type type d'appareil Toesteltype	Teilenummer part number numéro Toestelnummer	Geräteerkennung appliance code code d'appareil Toestelvariant DSN Offset (d.76; d.93)
DK (SE, NO)	ecoTEC exklusiv VC	VC DK 146/4-7	0010004128	6
	ecoTEC exklusiv VC	VC DK 276/4-7	0010004129	8
	ecoTEC exklusiv VC	VC DK 356/4-7	0010004130	9
	ecoTEC exclusive VC	VC DK 356/4-7 A	0010017813	9
	ecoTEC exklusiv VC	VC DK 466/4-7	0010004131	10
	ecoTEC exclusive VC	VC DK 466/4-7 A	0010017814	10
ES	ecoTEC exklusiv VC	VC BE 146/4-7	0010012912	6
	ecoTEC exklusiv VC	VC BE 206/4-7	0010012913	7
	ecoTEC exklusiv VC	VC BE 276/4-7	0010012914	8
IT	ecoBLOCK exklusiv VC	VM IT 146/4-7	0010004133	6
	ecoBLOCK exklusiv VC	VM IT 206/4-7	0010004134	7
	ecoBLOCK exklusiv VC	VM IT 276/4-7	0010004135	8
	ecoBLOCK exklusiv VC	VM IT 356/4-7	0010004136	9
	ecoBLOCK exklusiv VC	VM IT 466/4-7	0010004137	10

0020072070_05 INT 022015